



# Cleaning & Disinfecting During the covid-19 outbreak

At Mirus we have been working hard to develop **Super Professional Antiviral Disinfectant**. Independently tested to **BS EN 14476** its powerful formulation **kills a range of pathogenic viruses including Coronavirus, in under 5 minutes**. The safe fragrance-free formula is suitable for use on most non-porous surfaces and when used as directed, leaves treated surfaces **safe for human contact**.

- ✓ Kills 99.99% of germs and viruses
- ✓ Cleans and disinfects
- ✓ Non bleach formula
- ✓ Safe for food preparation areas
- ✓ Tested to BS EN 1276 & BS EN 13697
- ✓ Available NOW in a 750ml ready-to-use trigger spray & 5 litre ready-to-use refill



Enhanced cleaning protocols along with additional sanitisation and more frequent cleaning routines are strongly recommended during the current COVID-19 outbreak.

Below is a list of some of the key areas that should be cleaned along with guidelines on how to use **Super Professional Antiviral Disinfectant**.

**Please note** – The following information does not cover cleaning of all facilities, for more detailed advice we recommend speaking with a specialist cleaning company.

### Clean before disinfecting

Disinfectants aren't as effective if the surface isn't clean and free from debris. Viruses and bacteria can hide inside or below dirt and organic material which will make any disinfectant less effective. Always remove dirt and debris prior to disinfecting.

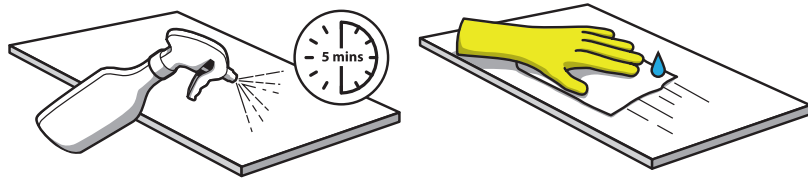
#### TOP TIP

If a surface is dirty, greasy, or grimy we recommend cleaning with an all-purpose cleaner or soap and water prior to disinfecting.



### Horizontal Surfaces

Spray **Super Professional Antiviral Disinfectant** onto flat surfaces and leave for a minimum of 5 minutes before wiping with a clean damp cloth or damp paper towel.



#### Example of areas to clean

Tables, hard back chairs, windowsills, counters, worktops, shelves, desks etc.

#### TOP TIP

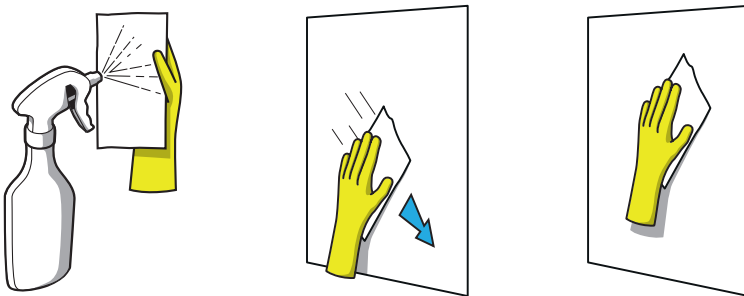
Avoid sharing cleaning cloths between areas to help prevent the spread of viruses and bacteria.

### Vertical Surfaces

Spray **Super Professional Antiviral Disinfectant** onto a microfibre cloth or paper towel and then wipe the area to be disinfected.

For efficient disinfecting, do not wipe in circular motions, wipe in one direction using parallel, overlapping strokes starting from the cleanest area working towards the dirtiest area. Work in sections ensuring full coverage of the area.

After 5 minutes wipe the surface with a clean damp microfibre cloth or paper towel.



#### Example of areas to clean

Walls, doors, hand rails, door handles, light switches, fridge doors, taps etc.

#### TOP TIP

Never spray cleaning products directly onto electrical outlets, computers, keyboards, phones or TVs.

Avoid sharing cleaning cloths between areas, to help prevent the spread of viruses and bacteria.

### Enhanced Cleaning Protocols

- Spray the surface to be disinfected and also the cloth for maximum contact coverage.
- Use a straight cleaning motion as opposed to circular to reduce spread of viruses and bacteria.
- Use coloured cleaning cloths for different areas.
- Always wear PPE and dispose of PPE, cleaning cloths and paper towels safely after use.
- When using cleaning products always read and follow the label.